

**IBM INSTALLATION INSTRUCTIONS**

<p><b>WRITTEN BY:</b></p> <p><b>CHECKED BY:</b> G A Carter</p> <p><b>APPROVED BY:</b> J L Regehr</p> <p><b>FIELD SUPPORT/DP CE REVIEW:</b> C A Lopez</p>
--

**TITLE: SYSTEM/5363--DASD UPGRADE**

**BEFORE INSTALLATION (Steps 1-8)**

**1.0 MACHINES AFFECTED**

System/5363 all models.

**2.0 PREREQUISITES/CONCURRENT/COMPANION**

**2.1 PREREQUISITES**

Customer must have Release 5.1 code and SSP.

Machine must be 5363 II or 5363 IV for third and fourth DASD upgrade.

For 314-MB drive

- Cannot be installed on the same DASD adapter as a 65-MB file
- Machine must be 5363 II, III, or IV for installation of 314-MB drive(s)
- Have 314-MB microcode (5363 II)
  - Diskette 61, PN 6374390 or higher part number
  - Diskette 62, PN 6374391 or higher part number
- 314-MB drive cannot be in position "A" on 5363 II systems
- Microcode required (5363 III or IV)
  - Diskette 61, PN 6374394 or higher part number
  - Diskette 62, PN 6374395 or higher part number

**2.2 CONCURRENT (MUST BE INSTALLED TOGETHER)**

If System 5363 or 5363 I upgrade to 5363 II, FC 2400 (3/4 DASD capability 5363) or FC 2450 (3/4 DASD capability 5363 I) or the System 5363 III to IV (FC 2465) have not been previously installed (see Companion Section), then FC 2400 or FC 2450 or FC 2465 must be installed concurrent with the 3/4 DASD upgrade.

EC NO.	843518B	837425A	837478	837493A				
DATE	29OCT87	21JUN88	03FEB89	29SEP89				

**IBM INSTALLATION INSTRUCTIONS**

2.3 COMPANION (MAY BE INSTALLED SEPARATELY)

The System 5363 or 5363 I upgrade to 5363 II, FC 2400 or FC 2450, or the System 5363 III to IV (FC 2465) may be installed prior to the third or fourth DASD upgrade.

**3.0 BMs TO BE INSTALLED**

<u>FFBM</u>	<u>DESCRIPTION</u>	<u>SYSTEM/36 MODEL CHANGE</u>
92X6353	65 MB File	None
or 92X3368	105 MB File	None
or 21F4215	314 MB File	None

**4.0 PREPARATION**

- 4.1 Verify system operation by running SYSTEST (see Section 3 of MIM) before installing this feature.
- 4.2 Ensure customer has a current backup.
- 4.3 Familiarize yourself with the purpose and details of this installation instruction.
- 4.4 Check all items and count parts listed on the BM to be installed to determine that all parts have been received.

**Note:** Prior to the handling of ESD-sensitive parts, refer to Appendix C of 5363 MIM.

**5.0 PROGRAM UPDATE**

None.

**6.0 PURPOSE AND DESCRIPTION**

6.1 PURPOSE

Upgrade a System 5363 or 5363 I with installation of second disk drive. Drive may be 65 MB or 105 MB.

Or

Upgrade a System 5363 III with installation of second drive. Drive may be 105 MB or 314 MB.

Or

EC NO. DATE	843518B 29OCT87	837425A 21JUN88	837478 03FEB89	837493A 29SEP89				
----------------	--------------------	--------------------	-------------------	--------------------	--	--	--	--

**IBM INSTALLATION INSTRUCTIONS**

Upgrade a System 5363 or 5363 I by replacing a 65 MB drive(s) with a 105 MB drive(s).

Or

Upgrade a System 5363 III or IV by replacing a 105 MB drive(s) with a 314 MB drive(s).

Or

Upgrade a System 5363 II with installation of an additional disk drive(s). Drive may be 65 MB, 105 MB, or 314 MB.

Or

Upgrade a System 5363 III or IV with installation of additional disk drive(s). Drive(s) may be 105 MB or 314 MB drive(s).

Or

Upgrade a System 5363 II by replacing a 65 MB drive(s) with a 105 MB or 314 MB drive(s).

Or

Upgrade a System 5363 II by replacing a 105 MB drive(s) with a 314 MB drive(s).

**6.2 DESCRIPTION**

Install disk drive.

Or

Remove disk drive and replace with new drive.

**7.0 INSTALLATION TIME**

<u>FFBM</u>	<u>DESCRIPTION</u>	<u>MACH HRS</u>	<u>SYS HRS</u>	<u>NO OF CEs</u>
92X6353	65 MB File	NA	NA	NA
92X3368	105 MB File	NA	NA	NA
21F4215	314 MB File	NA	NA	NA

**8.0 SPECIAL TOOLS AND/OR MATERIAL REQUIRED**

None.

EC NO.	843510B	837425A	337478	837493A				
DATE	29OCT87	21JUN88	03FEB89	29SEP89				

**IBM INSTALLATION INSTRUCTIONS****INSTALLATION (Steps 9-11)****9.0 SAFETY**

Unplug the system and attached units from the wall outlet before installation begins.

**10.0 DETAILS OF INSTALLATION**

- 10.1 If concurrent FC 2400 or FC 2450 or FC 2465 is to be installed, install at this time, then follow these instructions. Return to 10.3 or 10.4 when instructed for DASD upgrade.
- 10.2 REMOVE THE MACHINE REAR AND TOP COVERS (see MIM Procedure 305)
- 10.3 REMOVE DISK DRIVE(S)
- 10.3.1 If replacing a currently installed drive(s), remove the drive(s) to be replaced.
- 10.3.2 Remove the two or three retainer brackets (four or six screws) and cover plate(s) by using 4-mm socket, PN 6431965.
- 10.3.3 Slide the disk drive forward in the machine frame, leaving room at rear of drive to disconnect cables.
- 10.4 INSTALL DISK DRIVE
- Note:** Disk drives must be installed in consecutive positions.
- Adding a second drive. It must be installed in Position "B."
  - Adding a third drive. It must be installed in Position "C."
- 10.4.1 If installing the 65-MB or 105-MB drive(s), set switches on disk drive as shown in Figure 1.1.

EC NO.	843518B	837425A	837478	837493A				
DATE	29OCT87	21JUN88	03FEB89	29SEP89				

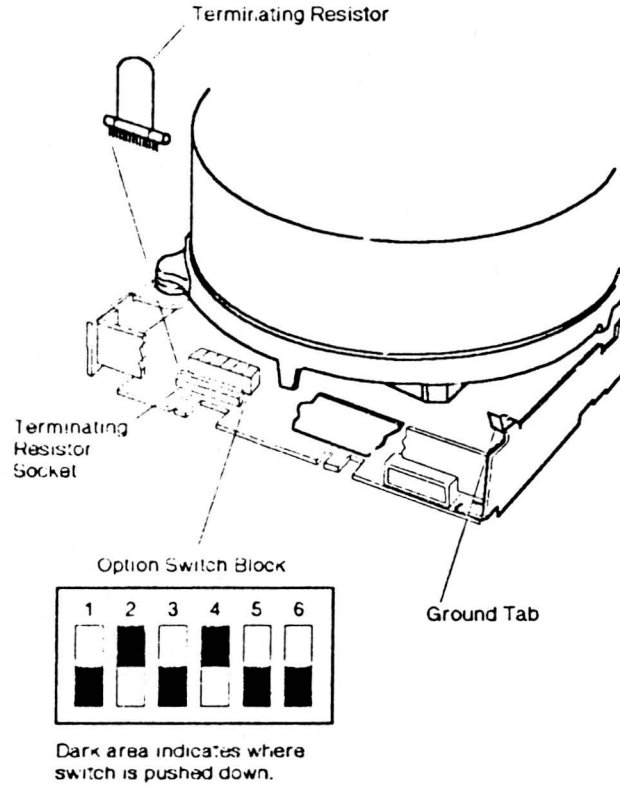


Figure 1.1

R36B155-2

EC NO.	843513B	837425A	337478	837493A				
DATE	29OCT87	21JUN88	03FEB89	29SEP89				

10.4.2 If installing the 314-MB drive(s):

10.4.2.1 Cannot be installed on same DASD adapter as a 65-MB drive.  
Cannot be in position "A" on 5363 II systems.

**Note:** Refer to the "Overview and Location Procedure" section in the MIM provided with this upgrade (Diskette, Disk Attachment Overview).

10.4.2.2 Set switches on disk drive as shown in Figure 1.2

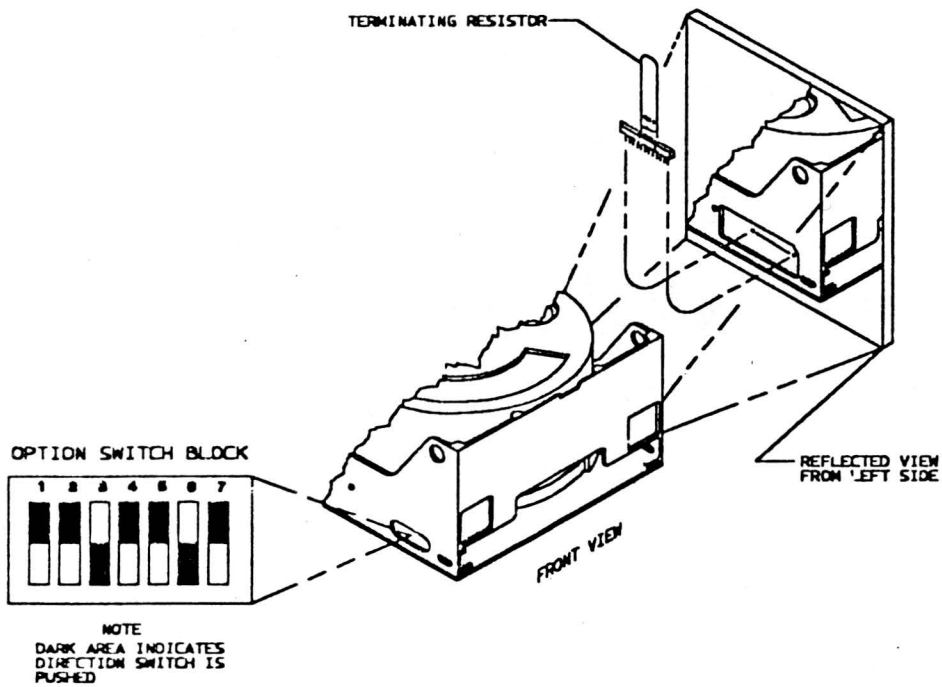


Figure 1.2

EC NO.	843518B	837425A	837478	837493A				
DATE	29OCT87	21JUN88	03FEB89	29SEP89				

**IBM INSTALLATION INSTRUCTIONS**

- 10.4.3 If installing a new Drive B or D, remove the terminating resistor from the back of the disk drive (see Figure 1.1 if installing 65 MB or 105 drive(s); see Figure 1.2 if installing 314 MB drive(s)).
- Note:** Terminator always remains on Drive A and Drive C.
- 10.4.4 Slide the disk drive(s) into the machine frame, leaving room at rear of drive to install cables (Figure 2).
- 10.4.5 Connect the cables/wiring to the rear of the disk drive (one power cable, two signal cables, and one ground wire each drive).
- 10.4.6 Reinstall existing cable retainers.
- 10.4.7 If installing DASD on a 5363 I, II, III, or 5363 IV system, reinstall long cable retainer PN 92X6460. (Refer to Drive A for proper installation.) Move Drive C slightly forward to allow easier installation of retainer bracket(s).
- Note:** Refer to Figure 4.
- 10.4.8 Slide the disk drive(s) completely into the machine frame.
- 10.4.9 If a 314-MB file is being installed, apply thin slice of foam that is provided vertically as shown in Figure 5.
- 10.4.10 If a 314-MB file is being installed, insert foam fillers to any unused Drive C and Drive D slots as shown in Figure 5.
- 10.4.11 Replace disk plate cover(s) where no disk drive is installed.
- 10.4.12 Replace the two or three retainer brackets (four or six screws).
- Note:** DASD retainer brackets are to be installed as shown in Figure 3.

EC NO.	843518B	837425A	837478	837493A				
DATE	29OCT87	21JUN88	03FEB89	29SEP89				

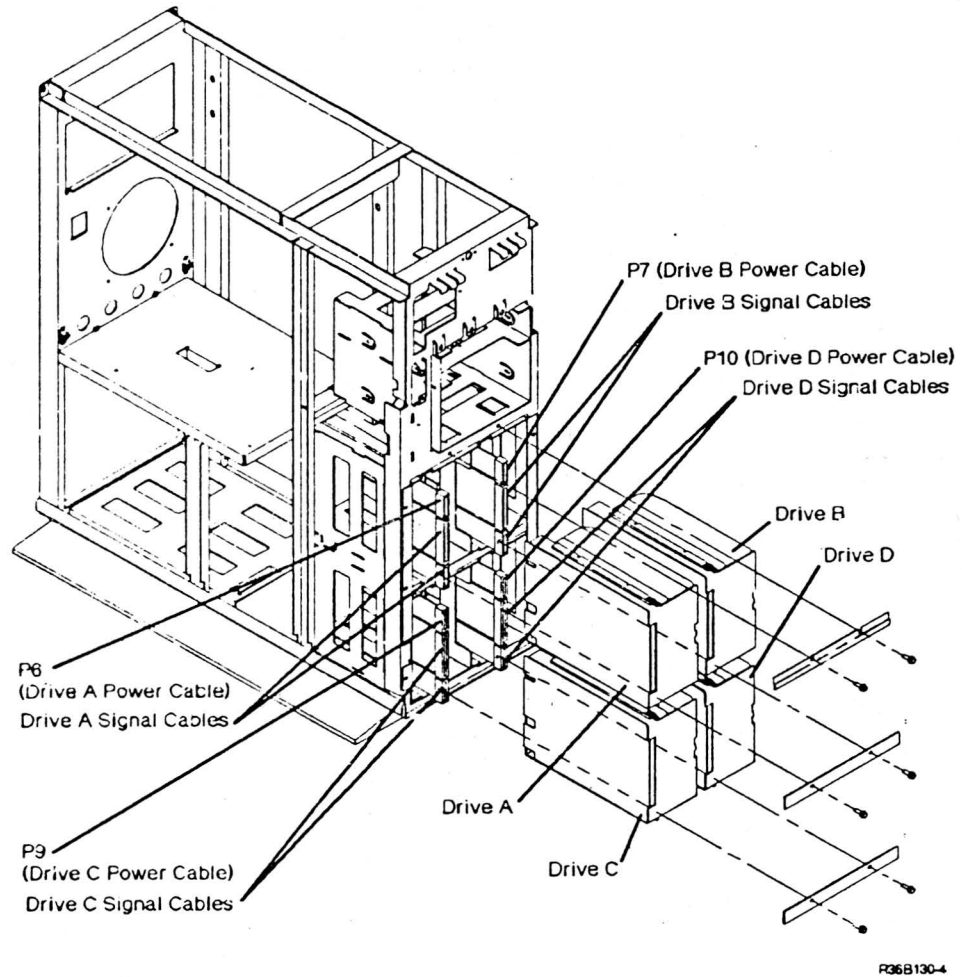


Figure 2

EC NO.	843518B	837425A	837478	837493A				
DATE	29OCT87	21JUN88	03FEB89	29SEP89				

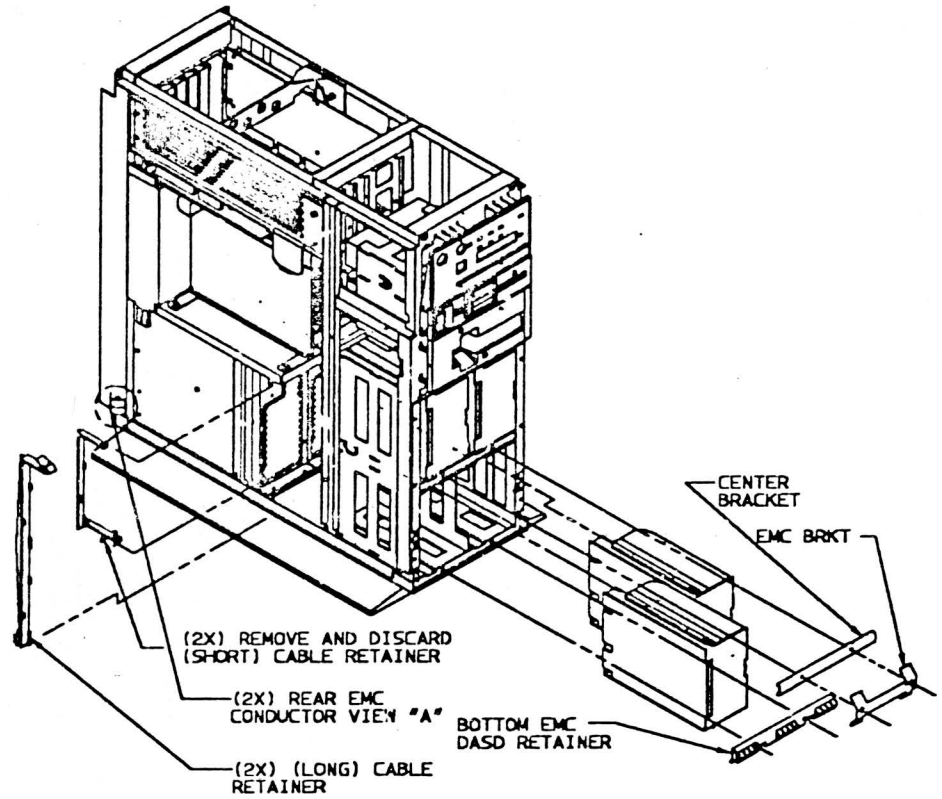


Figure 3

EC NO.	843518B	837425A	637478	837493A				
DATE	29OCT87	21JUN88	03FEB89	29SEP89				

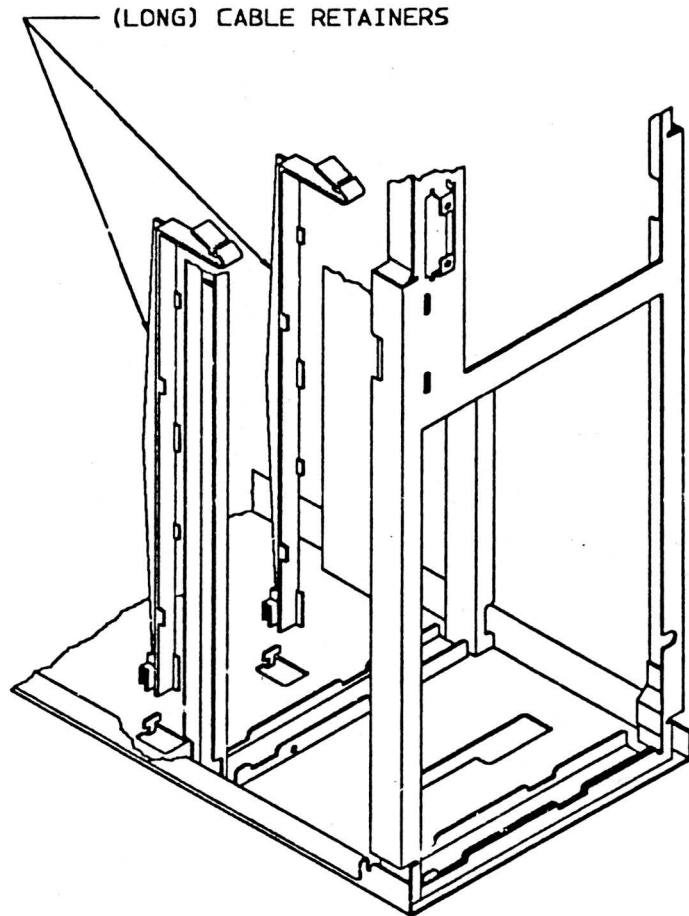


Figure 4

EC NO.	843518B	837425A	837478	837493A				
DATE	29OCT87	21JUN88	03FEB89	29SEP89				

NOTE:  
CENTER FOAM PAD BETWEEN  
THE VERTICAL UPRIGHTS OF  
THE FRAME AND THE FOUR  
SLOTS ON THE FILE CAGE.

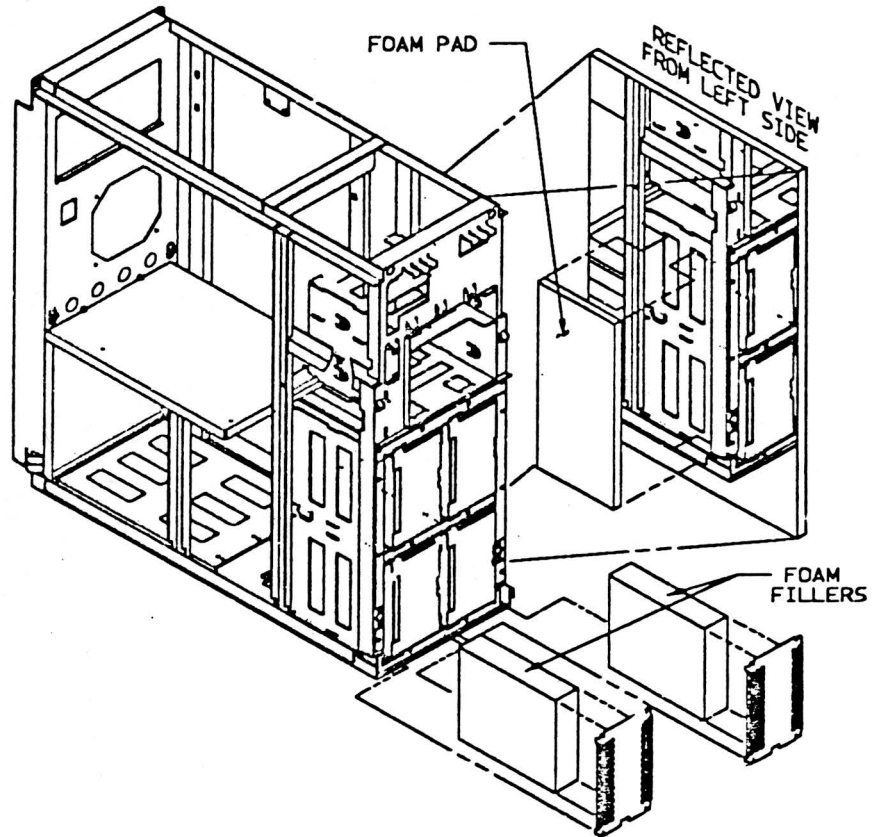


Figure 5

EC NO.	843518B	837425A	837478	837493A				
DATE	29OCT87	21JUN88	03FEB89	29SEP89				

**IBM INSTALLATION INSTRUCTIONS**

- 10.5 REPLACE COVERS
- 10.6 INITIALIZE DISK DRIVE
  - 10.6.1 Plug power cord into wall outlet.
  - 10.6.2 Set keylock to service position and power on the system.
  - 10.6.3 Perform the following steps to initialize each new disk drive from the DSKT61 diskette:
    - a. Select Function 3 (IPL Diagnostic Diskette)
    - b. Enter 22FF
    - c. Press the Start Function key
  - 10.6.4 When the "DISK INITIALIZATION PROGRAM" menu is displayed on the console, select Option 2 to initialize Disk(s) installed.
  - 10.6.5 Follow the program prompts until 100% of the disk has been initialized.
  - 10.6.6 Repeat 10.6.3 for each new disk drive installed.
- 10.7 Run disk analyze procedure.
  - 10.7.1 If the machine is a 5363 I or 5363 II, load the system from Diskette 61, PN 6374380 or higher part number.
  - 10.7.2 If the machine is a 5363 III or 5363 IV, load the system from Diskette 61, PN 6374394 or higher part number.
  - 10.7.3 If the machine is a 5363, load the system from Diskette 60, PN 6374373, or from Diskette 61, PN 6374380 or higher part number. Discard Diskette 60, PN 6374373, if Diskette 61 is PN 6374380 or higher part number.
    - a. Select function 3 (IPL Diagnostic Diskette)
    - b. Enter 0000.
    - c. Press the Start Function key.
  - 10.7.4 Select option 1, Disk Analyze.
  - 10.7.5 All disk drives that are installed should be listed on the screen with the correct size. If an installed drive is listed as "not installed," or the size listed does not match the correct size installed, see "805 Disk Drive Isolation Procedure" on page 8-6.
  - 10.7.6 IPL the system using the DKST61 diskette Mode 3, 10FF, and verify that the disk storage size is correct.

EC NO.	843518B	837425A	837478	837493A				
DATE	29OCT87	21JUN88	03FEB89	29SEP89				

**IBM INSTALLATION INSTRUCTIONS**

10.7.7 Follow the prompts to complete configure-customize.

**11.0 TEST PROCEDURE**

11.1 Once configure-customize is complete, re-IPL the system and run SYSTEST to verify the function of the disk drive.

11.2 Notify customer that they must reload microcode PTF(s).

**AFTER INSTALLATION (Steps 12-15)**

**12.0 FIELD UPDATES**

If installing a 314-MB drive(s), discard previous DSKT61 and DSKT62 and replace with those provided with update.

**13.0 FIELD SUPPORT PUBLICATION**

13.1 If installing 314-MB drive, discard previous documentation and replace with documentation provided with update.

**14.0 PARTS DISPOSITION: DOMESTIC AND WT**

14.1 PURCHASED MACHINES

All removed parts are the property of the customer and should remain with the customer.

14.2 DOCUMENTATION

Dispose of locally.

**15.0 MACHINE RECORDS**

15.1 Report installation and quality according to existing procedures.

EC NO.	843518B	837425A	837478	837493A				
DATE	29OCT87	21JUN88	03FEB89	29SEP89				

14NOV89 1830

PG-001

ORG LOC BLDG DEPT ADDRESSEE  
D37 SAMP GDT. 0928 G.D.T.S.PALOMBA

FIELD ENGINEERING BILL-21F4215

EC LEVEL- 837493A LOC-VIME

-----  
MACHINE TYPE-5363-

TITLE- FFB/M DASD EXPANSION 314MB FILE  
-----

MAINTENANCE REFERENCE MATERIAL

CK PART NUMBER	QUANTITY	U/M	FRU	NAME	DESCRIPTION	REFERENCE/EC
21F4215	1	1		FFB/M	B/M COPY	
J 6374394	1	1		DISKETTE A	DSKT 61	
J 6374395	1	1		DISKETTE A	DSKT 62	
92X6353	1	1		FFB/M-INST	INSTRUCTION	837493A

PARTS AND ASSEMBLIES

CK PART NUMBER	QUANTITY	U/M	FRU	NAME	DESCRIPTION	REFERENCE/EC
21F3125	1	1		LABEL		
21F4245	1	1		FOAM	AIRFLOW	
21F4250	1	1		FILE FRU	314 MEG FILE	
21F4251	2	1		FOAM		
92X6374	1	1		MANUAL	SY31-9054-5	837498
92X6375	1	1		MANUAL	SY31-9055-4	837498

COMMENTS- NONE

END OF BILL OF MATERIAL

ATTENTION TO CE :

P/N 92X6374 INCLUDES MANUAL SY31-9054

P/N 92X6375 INCLUDES MANUAL SY31-9055

14NOV89 1830

PG-002

ORG	LOC	BLDG	DEPT	ADDRESSEE
D37	SAMP	GDT.	0928	G.D.T.S.PALOMBA

FIELD ENGINEERING BILL-21F4215

EC LEVEL- 837493A LOC-VIME

THE FOLLOWING ITEMS IN BILL 21F4215 ARE J SOURCED OR J CHARACTER:  
6374394, 6374395,

\*\*\*\*\*

THIS PAGE FOR LOCAL USE. DO NOT SEND TO THE FIELD.

\*\*\*\*\*

\*\*\*LAST PAGE\*\*\*

14NOV89 1830

PG-001

ORG LOC BLDG DEPT ADDRESSEE  
D37 SAMP GDT. 0928 G.D.T.S.PALOMBA

FIELD ENGINEERING BILL-6374394

EC LEVEL- 837495 LOC-VIME

-----  
MACHINE TYPE-NONE

TITLE- DISKETTE ASSEMBLY DSKT 61  
-----

MAINTENANCE REFERENCE MATERIAL

NONE  
-----

PARTS AND ASSEMBLIES

CK PART NUMBER	QUANTITY	U/M	FRU	NAME	DESCRIPTION	REFERENCE/EC
21F4228	1	1		DATA	DSKT 61	837495
6022805	1	1		ENVELOPE		
6295022	1	1		DISKETTE	UNFORMATTED	
6369778	1	1		LABEL	FAN FOLD	

COMMENTS- NONE

END OF BILL OF MATERIAL

\*\*\*LAST PAGE\*\*\*

14NOV89 1830

PG-001

ORG LOC BLDG DEPT ADDRESSEE  
D37 SAMP GDT. 0928 G.D.T.S.PALOMBA

FIELD ENGINEERING BILL-6374395

EC LEVEL- 837495 LOC-VIME

-----  
MACHINE TYPE-NONE

TITLE- DISKETTE ASSEMBLY DSKT 62  
-----

MAINTENANCE REFERENCE MATERIAL

NONE  
-----

PARTS AND ASSEMBLIES

CK PART NUMBER	QUANTITY	U/M	FRU	NAME	DESCRIPTION	REFERENCE/EC
21F4229	1	1		DATA	DSKT 62	837495
6022805	1	1		ENVELOPE		
6295022	1	1		DISKETTE	UNFORMATTED	
6369778	1	1		LABEL	FAN FOLD	

COMMENTS- NONE

END OF BILL OF MATERIAL

\*\*\*LAST PAGE\*\*\*